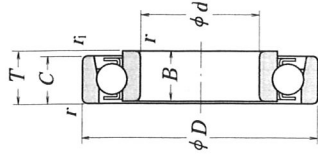


Bore Diameter 4 - 20 mm



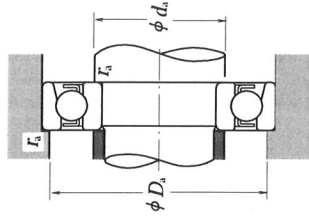
Outside Diameter Tolerance (Class N)
Units : μm

Nominal Outside Diameter D (mm)	Single Plane Mean Outside Diameter ΔD_{mp}			EN Series		
	Over	Incl.	Low	High	Low	High
10	+8	0	0	0	-8	0
18	+8	0	0	0	-8	0
30	+9	0	0	0	-9	0
50	+11	0	0	0	-11	0

Dynamic Equivalent Load

$$P = X F_r + Y F_a$$

$F_a/F_r \leq e$	X	Y	$F_a/F_r > e$	
			X	Y
1	0	0.5	2.5	0.2



Boundary Dimensions (mm)			Basic Load Ratings (kgf)			Limiting Speeds (min ⁻¹)		Bearing Numbers		Mass (kg)	
d	D	B, C, T	C_r	C_{0r}	C_{1r}	Grease	Oil	E Series	EN Series		
4	16	5	0.15	0.1	1650	288	34 000	40 000	E 4	EN 4	approx.
5	16	5	0.15	0.1	1650	288	34 000	40 000	E 5	EN 5	
6	27	7	0.3	0.15	2490	445	30 000	36 000	E 6	EN 6	
7	22	7	0.3	0.15	2490	445	30 000	36 000	E 7	EN 7	0.013
8	24	7	0.3	0.15	3450	650	28 000	34 000	E 8	EN 8	
9	28	8	0.3	0.15	4550	880	24 000	30 000	E 9	EN 9	
10	28	8	0.3	0.15	4550	880	24 000	30 000	E 10	EN 10	0.021
11	32	7	0.3	0.15	4400	845	22 000	26 000	E 11	EN 11	
12	32	7	0.3	0.15	4400	845	22 000	26 000	E 12	EN 12	
13	30	7	0.3	0.15	4400	845	22 000	26 000	E 13	EN 13	0.021
14	35	8	0.3	0.15	5800	1150	19 000	22 000	—	EN 14	
15	35	8	0.3	0.15	5800	1150	19 000	22 000	E 15	EN 15	0.034
40	10	0.6	0.3	0.3	7400	1500	17 000	20 000	BO 15	—	
16	38	10	0.6	0.2	6900	1380	17 000	22 000	—	EN 16	0.055
40	10	0.6	0.3	0.3	7400	1500	17 000	20 000	L 17	—	
42	11	0.6	0.3	0.3	7350	1500	16 000	19 000	—	EN 17	0.080
44	11	0.6	0.3	0.3	7350	1500	16 000	19 000	BO 17	—	
18	40	9	0.6	0.2	5250	1030	17 000	20 000	—	EN 18	0.051
19	40	9	0.6	0.2	5250	1030	17 000	20 000	E 19	EN 19	
20	47	12	1	0.6	11200	2380	14 000	17 000	E 20	EN 20	0.089
47	14	1	0.6	0.6	11200	2380	14 000	17 000	L 20	—	

- Remarks**
1. The outside diameters of Magneto Bearings Series E always have plus tolerances.
 2. When using Magneto Bearings other than E, please contact NSK.