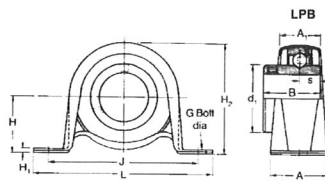


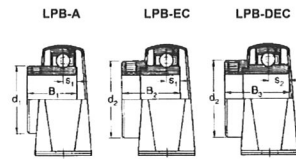
Self-Lube pressed steel pillow block units  
(zinc plated housings)

RHP bearings

LPB SERIES (ISO)



Note: these units are not re-greaseable.



Shaft diameter	RHP designation		Basic bearing group insert	Housing group	Housing Dimensions							
					L	H	H <sub>1</sub>	H <sub>2</sub>	J	G		
mm	inches			mm inches								
12	LPB12	LPB12EC	1017	1	85.7	22.2	2.4	43.2	68.0	8		
15	LPB15	LPB15EC			3.374	.874	.094	1.701	2.677	5/16		
16	LPB16	LPB16EC										
17	LPB17	LPB17EC										
	LPB16	LPB16EC										
	LPB15	LPB15EC										
	LPB14	LPB14EC										
20	LPB20	LPB20A	LPB20EC	LPB20DEC	1020	2	98.4	25.4	2.4	49.9	76.0	8
	LPB19	LPB19A	LPB19EC	LPB19DEC			3.874	1.000	.084	1.965	2.952	5/16
25	LPB25	LPB25A	LPB25EC	LPB25DEC	1025	3	108.0	28.6	2.6	55.8	86.0	10
	LPB18	LPB18A	LPB18EC	LPB18DEC			4.252	1.126	.110	2.197	3.386	3/8
	LPB17	LPB17A	LPB17EC	LPB17DEC								
	LPB16	LPB16A	LPB16EC	LPB16DEC								
30	LPB30	LPB30A	LPB30EC	LPB30DEC	1030	4	117.5	33.3	3.6	65.7	95.0	10
	LPB19	LPB19A	LPB19EC	LPB19DEC			4.626	1.311	.142	2.587	3.740	3/8
	LPB18	LPB18A	LPB18EC	LPB18DEC								
	LPB17	LPB17A	LPB17EC	LPB17DEC								
	LPB16	LPB16A	LPB16EC	LPB16DEC								
35	LPB11AL	LPB11AAL	LPB11AEC	LPB11ADEC	1035	5	128.6	39.7	4.4	77.5	106.0	10
	LPB36	LPB36A	LPB36EC	LPB36DEC			5.063	1.563	.173	3.051	4.173	3/8
	LPB15	LPB15A	LPB15EC	LPB15DEC								
	LPB14	LPB14A	LPB14EC	LPB14DEC								

												Max. radial downward radial load	Rec. max speed	Mass (approx.)
A	A <sub>1</sub>	B	B <sub>1</sub>	B <sub>2</sub>	B <sub>3</sub>	s	s <sub>1</sub>	s <sub>2</sub>	d <sub>1</sub>	d <sub>2</sub>		rev/min	kg	
mm	inches											newtons	rev	lb
25.4	15.9	27.38	-	28.54	-	11.55	6.55	-	24.21	28.58	1330	3000	0.2	
1000	626	1078	-	1124	-	455	258	-	953	1125	300		0.4	
31.7	21.6	30.96	25.77	30.92	43.62	12.75	7.56	17.12	28.50	33.30	1570	3000	0.2	
1248	850	1219	1015	1217	1717	502	298	674	1122	1311	350		0.5	
31.7	21.6	34.11	27.35	30.92	44.40	14.32	7.56	17.49	34.01	38.10	1780	2500	0.3	
1248	850	1343	1077	1217	1748	564	298	689	1339	1500	400		0.7	
37.5	25.5	38.10	31.21	35.68	48.42	15.93	9.04	18.32	40.00	44.45	2670	2500	0.5	
1476	1004	1500	1229	1405	1906	627	356	721	1575	1750	600		1.1	
41.0	28.4	42.88	34.90	38.88	51.18	17.53	9.55	18.89	46.69	55.58	3560	2000	0.9	
1614	1118	1688	1374	1531	2015	690	376	744	1838	2188	800		1.9	

Please check availability