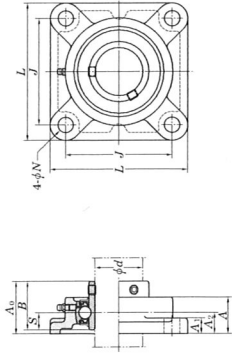


Square-flanged type

UCF-E
Cylindrical bore (with set screws)
d 12 ~ 55 mm



Unit: mm

Housing No.	J_{min}	X
F204E-F210E	FX05E-FX10E	±0.3
F211E-F217E	FX11E-FX17E	±0.8
F204E-F210E	FX05E-FX10E	±0.3
F211E-F217E	FX11E-FX17E	±0.8

Unit: mm

Housing No.	J_{min}	X
F204E-F210E	FX05E-FX10E	±0.3
F211E-F217E	FX11E-FX17E	±0.8

Shaft Dia. mm	d	Dimensions													Bolt Size inch	Unit No.	Housing No.	Bearing No.	Basic Load Ratings		Fatigue Load Limit kN	Factor f_0	Mass kg
		L	A	J	N	A ₁	A ₂	A ₀	B	S	C _r	C _{0r}											
12	1/2																						
15	5/8	3 3/8	1	2 33/64	7/16	7/16	19/32	1 5/16	1 220	0.500													
17	3/4	86	25.5	64	11	11	15	33.3	31	12.7													
20	7/8																						
25	1 1/8	95	27	70	12	13	16	35.8	34.1	14.3													
	1	108	30	83	12	13	18	40.2	38.1	15.9													
30	1 1/4	117	34	92	13	14	19	44.4	42.9	17.5													
	1 1/2	130	38	102	13	14	21	51.2	49.2	19													
40	1 3/4	137	40	105	15	16	22	52.2	49.2	19													
	1 3/8	143	40	111	15	16	23	55.6	51.6	19													
50	1 7/8	162	44	130	16.5	17	26	59.4	55.6	22.2													
	1 3/2	175	49	143	16.5	17	29	68.7	65.1	25.4													
55	2	175	49	143	16.5	17	29	68.7	65.1	25.4													

Remarks 1. In Part No. of unit, fitting codes follow bore diameter numbers. (See Table 2.5 in P.11.)

2. Part No. of applicable grease nipples are shown below.

A-1/4-28UNF 201-210, X05-X09

A-R1/8 211-217, X10-X17

3. As for the triple-lip seal type product (from 201 to 205 are the double-lip seal type products), supplementary code L3 (L2) follows the Part No. of unit or bearing. (Example of Part No.: UCF206EJL3, UC206L3)

4. For the dimensions and forms of applicable bearings, see the dimensional tables of ball bearings for unit.

5. Housings of spheroidal graphite iron casting are also available.