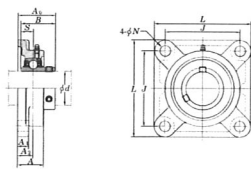


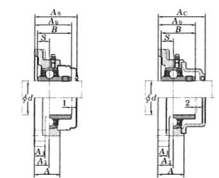
Square-flanged type

UCF
Cylindrical bore (with set screws)
d 12 ~ (45) mm



With Pressed Steel Cover

With Cast Iron Cover



Variations of tolerance of distance from mounting surface to center of spherical bore (L₁) and tolerance of position of bolt hole (X)

| Unit: mm | | | |
|-------------|----------------|-----------|------|
| Housing No. | L ₁ | X | |
| F204-F210 | F205-F210 | F205-F210 | +0.3 |
| F211-F218 | F211-F220 | F211-F220 | +0.8 |

Variations of tolerance of bolt hole diameter (L₂)

| Unit: mm | | | |
|-------------|----------------|-----------|------|
| Housing No. | L ₂ | | |
| F204-F218 | F205-F218 | F205-F215 | +0.2 |
| FX20 | FX18-F220 | FX18-F220 | +0.3 |

| Shaft Dia. mm inch d | Dimensions | | | | | | | | | Bolt Size inch mm | Standard Unit No. | Housing No. | Bearing No. | Mass kg | Basic Load Ratings kN C _v C _{0v} | Frige Load Limit kN C _c | Factor f ₀ | With Pressed Steel Cover | | | | With Cast Iron Cover | | | | | | | | |
|-------------------------------|------------|---|---|---|----------------|----------------|----------------|---|---|----------------------------|----------------------|---------------------|-------------------|------------|---------------------------------------------------------------|---------------------------------------------|--------------------------|--------------------------|--------------------|--------------------|-------------------------------------------|----------------------|----------------------|----------------------|--------------------|-------------------------------------------|------------|-----|--|--|
| | L | A | J | N | A ₁ | A ₂ | A ₃ | B | S | | | | | | | | | Unit No. | Open End Type | Closed End Type | Dimension mm inch A ₄ | Mass kg | Unit No. | Open End Type | Closed End Type | Dimension mm inch A ₄ | Mass kg | | | |
| 12 | | | | | | | | | | | | UCF201 UCF201-8 | UC201 UC201-8 | 0.64 | | | | UCF201C UCF201D | UCF201D | 37.5 | 1 7/8 | 0.64 | | | | | | | | |
| 15 | | | | | | | | | | | | UCF202 UCF202-10 | UC202 UC202-10 | 0.62 | 12.8 | 6.65 | 0.302 | 13.2 | UCF202C UCF202D | UCF202D | 37.5 | 1 7/8 | 0.62 | | | | | | | |
| 17 | | | | | | | | | | | | UCF203 UCF204-12 | UC203 UC204-12 | 0.61 | | | | UCF203C UCF203D | UCF203D | 37.5 | 1 7/8 | 0.61 | | | | | | | | |
| 20 | | | | | | | | | | | | UCF204 UCF205-15 | UC204 UC205-15 | 0.61 | | | | UCF204C UCF204D | UCF204D | 37.5 | 1 7/8 | 0.59 | UCF204FC UCF204FD | UCF204FD | 46 | 1 7/8 | 0.74 | | | |
| 25 | | | | | | | | | | | | UCF205 UCF206-16 | UC205 UC206-16 | 0.83 | 14.0 | 7.85 | 0.357 | 13.9 | UCF205C UCF205D | UCF205D | 40.5 | 1 7/8 | 0.83 | UCF205FC UCF205FD | UCF205FD | 49 | 1 7/8 | 1.0 | | |
| | | | | | | | | | | | | UCF205 UCF205-16 | UC205 UC205-16 | 0.83 | 1.2 | 19.5 | 11.3 | 0.514 | 13.9 | UCF205C UCF205D | UCF205D | 44.5 | 1 7/8 | 1.2 | | | | | | |
| 30 | | | | | | | | | | | | UCF206 UCF206-18 | UC206 UC206-18 | 1.3 | 21.2 | 10.9 | 0.465 | 12.6 | UCF206C UCF206D | UCF206D | 44.5 | 1 7/8 | 1.1 | UCF206FC UCF206FD | UCF206FD | 53 | 2 1/8 | 1.4 | | |
| | | | | | | | | | | | | UCF206 UCF206-18 | UC206 UC206-18 | 1.3 | 1.1 | 19.5 | 11.3 | 0.514 | 13.9 | UCF206C UCF206D | UCF206D | 49 | 1 7/8 | 1.6 | | | | | | |
| 35 | | | | | | | | | | | | UCF207 UCF207-20 | UC207 UC207-20 | 1.6 | 25.7 | 15.4 | 0.700 | 13.9 | UCF207C UCF207D | UCF207D | 49 | 1 7/8 | 1.5 | UCF207FC UCF207FD | UCF207FD | 58 | 2 1/8 | 1.9 | | |
| | | | | | | | | | | | | UCF207 UCF207-20 | UC207 UC207-20 | 1.6 | 2.0 | 29.1 | 17.8 | 0.809 | 14.0 | UCF207C UCF207D | UCF207D | 55.5 | 2 1/8 | 2.0 | | | | | | |
| 40 | | | | | | | | | | | | UCF208 UCF208-25 | UC208 UC208-25 | 2.0 | 33.4 | 19.3 | 0.877 | 13.2 | UCF208C UCF208D | UCF208D | 55.5 | 2 1/8 | 1.9 | UCF208FC UCF208FD | UCF208FD | 64 | 2 1/8 | 2.3 | | |
| | | | | | | | | | | | | UCF208 UCF208-25 | UC208 UC208-25 | 2.0 | 2.4 | 34.1 | 21.3 | 0.968 | 14.0 | UCF208C UCF208D | UCF208D | 56.5 | 2 1/8 | 2.4 | | | | | | |
| 45 | | | | | | | | | | | | UCF209 UCF209-26 | UC209 UC209-26 | 2.2 | 40.7 | 24.0 | 1.09 | 13.2 | UCF209C UCF209D | UCF209D | 60 | 2 1/8 | 2.2 | UCF209FC UCF209FD | UCF209FD | 71 | 2 7/8 | 3.6 | | |
| | | | | | | | | | | | | UCF209 UCF209-26 | UC209 UC209-26 | 2.2 | 2.2 | 34.1 | 21.3 | 0.968 | 14.0 | UCF209C UCF209D | UCF209D | 56.5 | 2 1/8 | 2.2 | | | | | | |

Remarks 1. In Part No. of unit and units with covers, fitting codes follow bore diameter numbers. (See Table 2.5 in P.11.)
 2. Part No. of applicable grease nipples are shown below.
 A-114-28UNF.....201-210, X05-X09, 305-308
 A-1118.....211-218, X10-X20, 309-328
 3. As for the triple-lip seal type product (from 201 to 205 are the double-lip seal type products), supplementary code L3 (L2) follows the Part No. of unit or bearing. (Example of Part No.: UCF206L3, UC206L3.)
 4. For the dimensions and forms of applicable bearings, see the dimensional tables of ball bearing for unit.
 5. Housings of spherical graphite iron casting are also available.